

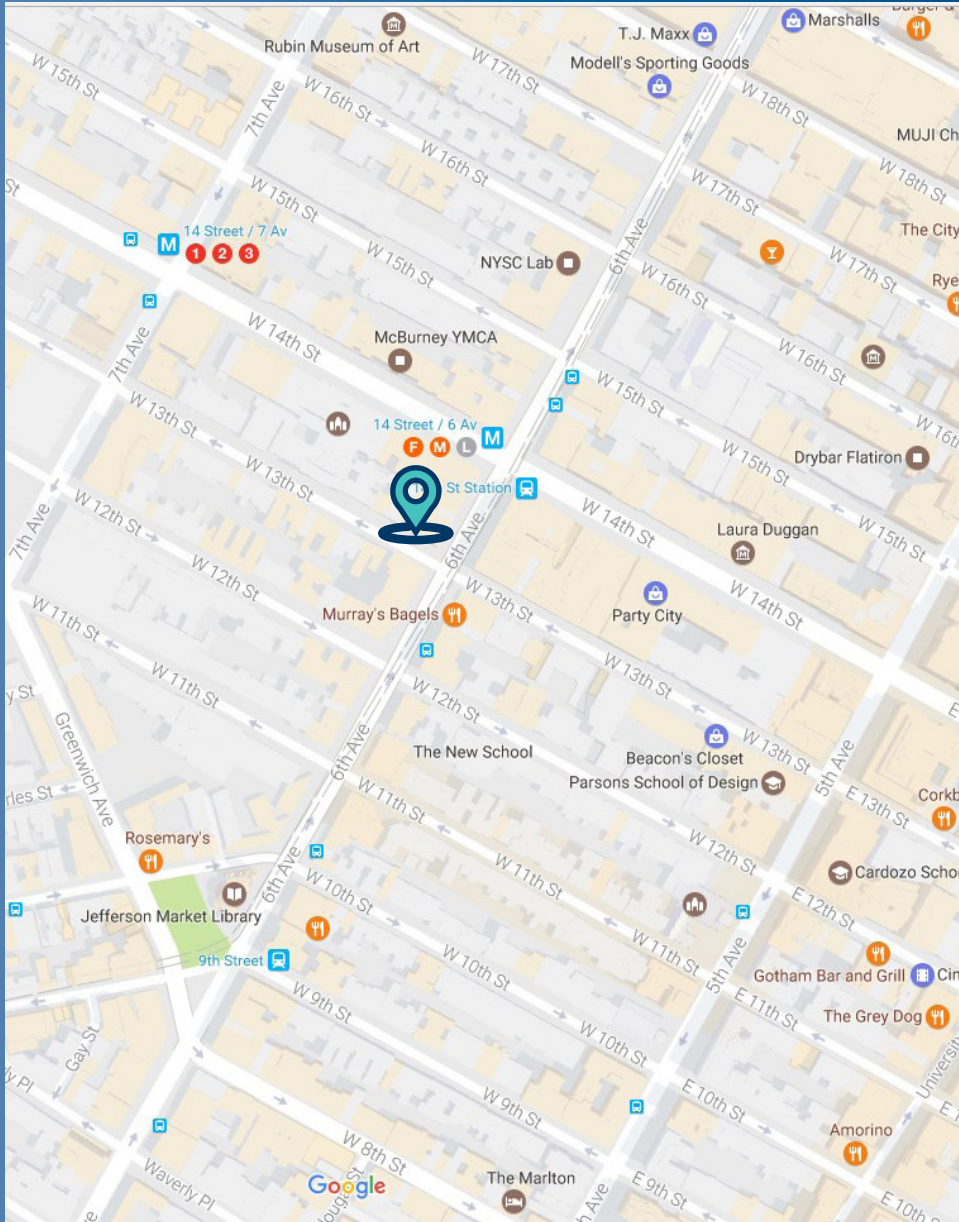
105 WEST 13TH STREET

BTW 6TH & 7TH AVENUES
NEW YORK, NY 10011

GREENWICH VILLAGE



105 WEST 13TH STREET



ADDRESS

105 West 13th Street, New York, NY 10011
Between 6th & 7th Avenues

SIZE

Ground Floor 3,003 SF
Lower Level 1,135 SF

ASKING PRICE

Upon Request

POSSESSION

Arranged

FRONTAGE

20' on West 13th Street

COMMENTS

- Great Location in the heart of Greenwich Village
- Fully Built Restaurant Space with Venting in Place
- Close Proximity to the 14th Street Subway Stations **1 2 3 F M L**

NEIGHBORS

Urban Outfitters, Rite Aid, Murray Bagels, Lens Crafters, Bank of America, Ricky's, Chipotle, AT&T, GNC, Wells Fargo, NYSC, Verizon & CVS

FOR MORE INFORMATION CONTACT EXCLUSIVE AGENTS:

LEE BLOCK
212.792.2649
lee@winick.com

DANIELLE WINICK
212.792.2628
danielle@winick.com

TEDDY SROUR
212.792.2608
tsroure@winick.com

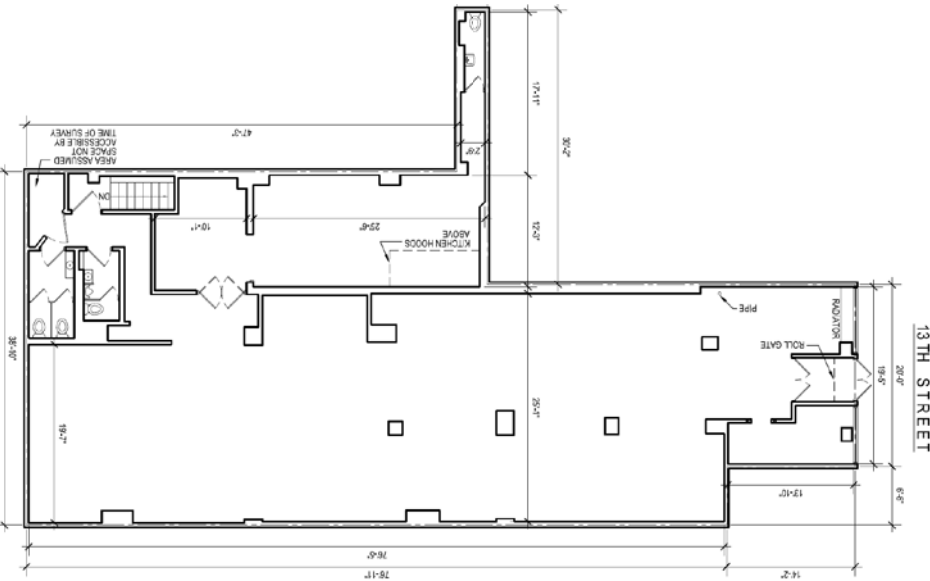
WINICK RETAIL SPECIALISTS

WINICK REALTY GROUP LLC
LICENSED REAL ESTATE BROKERS
655 Third Avenue, 8th Floor, New York, NY 10017
T. 212.792.2600 F. 212.792.2660 winick.com

Although all information regarding property for sale, rental or financing is from sources deemed reliable such information has not been verified, and no express representation is made nor is any to be implied as to the accuracy thereof, and it is submitted subject to errors, omissions, change of price, rental or other conditions, prior sale, lease or financing, or withdrawal without notice.

105 WEST 13TH STREET

GROUND FLOOR
3,003 SF



LOWER LEVEL
1,135 SF

