

# 37 ST MARKS PLACE

BETWEEN SECOND & THIRD AVENUES

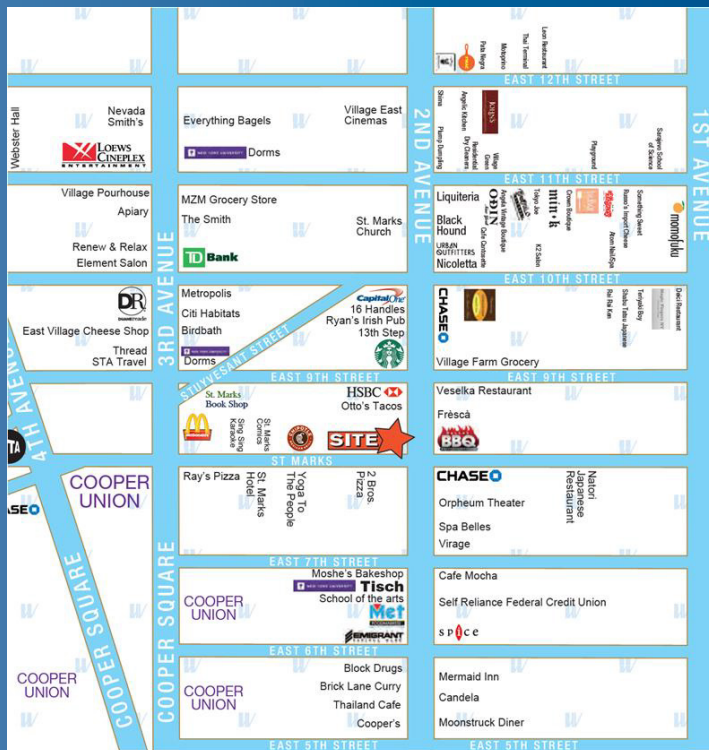
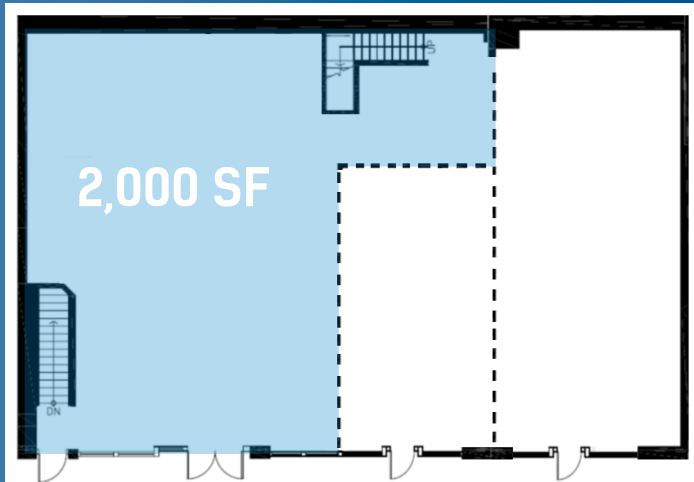
EAST VILLAGE

# AVAILABLE

**WINICK** RETAIL SPECIALISTS  
RETAIL FOR LEASE  
**212.792.2600**  
JEFF WINICK, CEO  
LEE BLOCK  
DANA ALBERT  
37 St Marks Place • winick.com/37

# LEA

# 37 St Marks Place



## ADDRESS

37 St Marks Place – New York, New York 10003  
(Between Second & Third Avenues)

## SIZE

Ground Floor – Approximately 2,000 SF

## ASKING PRICE

Upon Request

## POSSESSION

Immediate

## FRONTAGE

35 Feet on St Marks Place

## COMMENTS

- Incredible retail opportunity just off the busiest corner in the East Village
- Tremendous visibility with 35' of frontage AT GRADE and soaring ceiling heights
- One block from the new 400,000 SF office tower at 51 Astor Place

## NEIGHBORS

Mamoun's, Flywheel, CVS Health, Verizon, Dallas BBQ, Otto's Tacos, Barcade, Starbucks, Caffé Bene

FOR MORE INFORMATION CONTACT EXCLUSIVE AGENTS:

**LEE BLOCK, EVP**  
212.792.2649  
lee@winick.com

**JEFF WINICK, CEO**  
212.792.2601  
jeff@winick.com

**DANIELLE WINICK**  
212.792.2628  
danielle@winick.com

**WINICK** RETAIL SPECIALISTS

WINICK REALTY GROUP LLC  
LICENSED REAL ESTATE BROKERS  
655 Third Avenue, 8th Floor, New York, NY 10017  
T. 212.792.2600 F. 212.792.2660 winick.com

Although all information regarding property for sale, rental or financing is from sources deemed reliable such information has not been verified, and no express representation is made nor is any to be implied as to the accuracy thereof, and it is submitted subject to errors, omissions, change of price, rental or other conditions, prior sale, lease or financing, or withdrawal without notice.