

234
EAST 23RD

WINICK RETAIL SPECIALISTS





234 EAST 23RD

ADDRESS

234 East 23rd Street, New York, New York 10010
Between 2nd & 3rd Avenues

SIZE

Ground Floor – Approximately 4,565 Total SF

FRONTAGE

Space A: Approximately 22 feet

Space B: Approximately 20 feet

* Spaces can be leased separately or combined

ASKING PRICE

Upon Request

POSSESSION

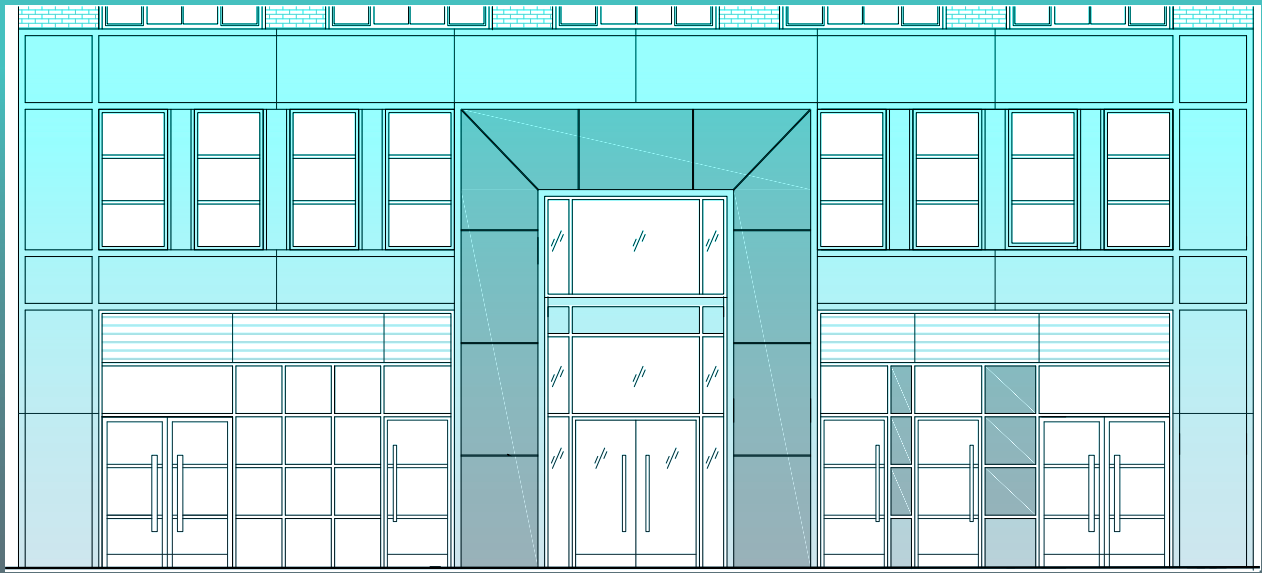
Arranged

COMMENTS

- Brand New East 23rd Street Prime Retail Opportunity
- Flexible divisions considered
- Dense mix of residential, student, and commercial traffic.
- All uses considered

NEIGHBORS

School of Visual Arts, City MD, Sleepy's, Shaka Burrito, Epiphany Library, Oriental Kitchen, Orion Diner & Grill, Amalgamated Bank, Starbucks, HSBC, Duane Reade



← 22 FT →

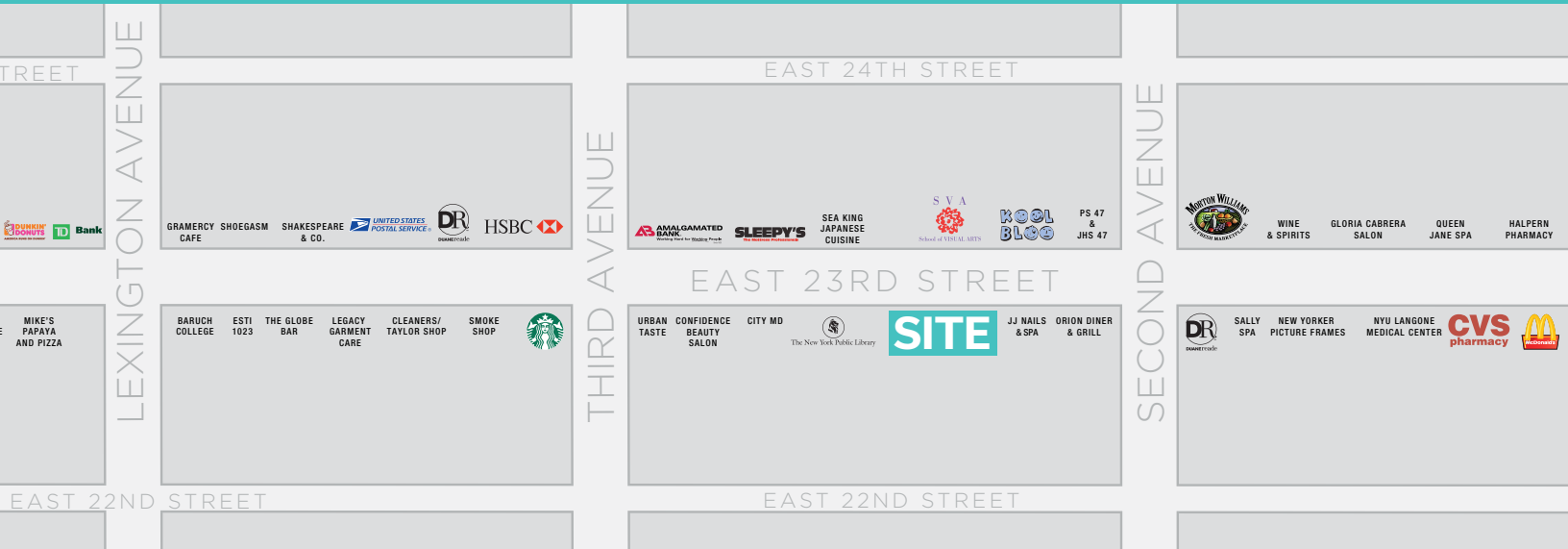
← 20 FT →

GROUND FLOOR

4,565 SF

23RD STREET





234
EAST 23RD

FOR MORE INFORMATION CONTACT EXCLUSIVE AGENTS:

JOSHUA SIEGELMAN
212.792.2613
jsiegelman@winick.com

IAN ZIMMERMAN
212.792.2647
izimmerman@winick.com

MICHAEL SHKRELI
212.792.2638
mshkreli@winick.com

WINICK RETAIL SPECIALISTS

WINICK REALTY GROUP LLC | LICENSED REAL ESTATE BROKERS
T. 212.792.2600 F. 212.792.2660 winick.com

Although all information regarding property for sale, rental or financing is from sources deemed reliable such information has not been verified, and no express representation is made nor is any to be implied as to the accuracy thereof, and it is submitted subject to errors, omissions, change of price, rental or other conditions, prior sale, lease or financing, or withdrawal without notice.