

1035 FULTON STREET

NORTHEAST CORNER OF
DOWNING STREET & FULTON STREET

CLINTON HILL



1035 FULTON STREET

ADDRESS

1035 Fulton Street, Brooklyn, NY 11238
(Northeast corner of Downing Street & Fulton Street)

SIZE

Ground Floor – 923 Square Feet (Light Grey) + 409+ Square Feet of Patio

ASKING PRICE

Upon Request

POSSESSION

Fall 2017

FRONTAGE

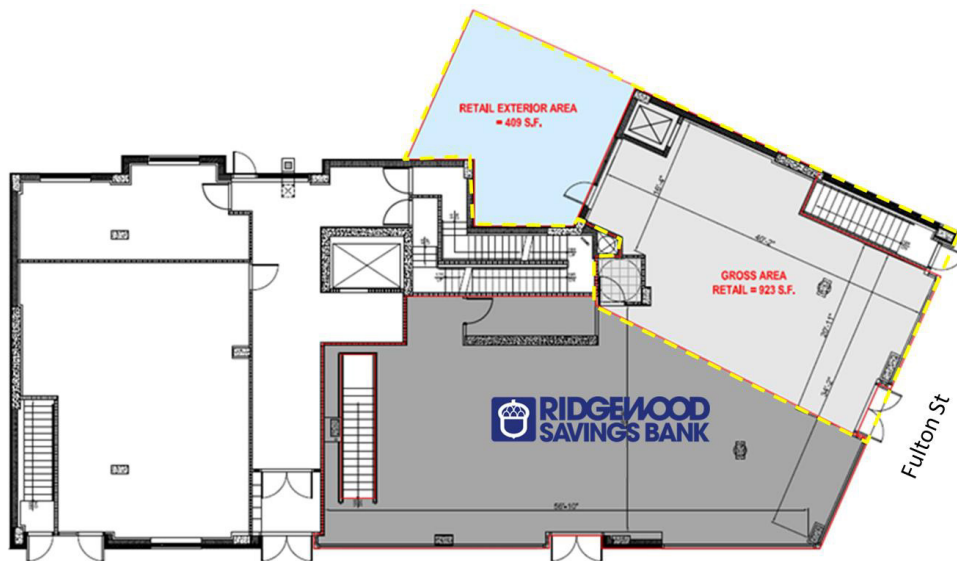
20 Feet on Fulton Street

COMMENTS

- Join Ridgewood Savings Bank
- All uses considered
- New building with all glass front
- 34 rental units above the retail space

NEIGHBORS

Putnam Triangle, Busy Bodies, The Good Batch, Outpost, Leon , Xochitl Taqueria, Crossfit Kingsboro, Sip, Fulton Bikes, Lunitas Empanadas, Tilda, Hill Café & More!



FOR MORE INFORMATION CONTACT EXCLUSIVE AGENTS:

JEFF WINICK, CEO

212.792.2601
jeff@winick.com

THOMAS CALIENDO

212.792.2617
tcaliendo@winick.com

DANIEL D. DEPASQUALE

212.792.2652
dan@winick.com

WINICK RETAIL SPECIALISTS

WINICK REALTY GROUP LLC
LICENSED REAL ESTATE BROKERS
655 Third Avenue, 8th Floor, New York, NY 10017
T. 212.792.2600 F. 212.792.2660 winick.com

Although all information regarding property for sale, rental or financing is from sources deemed reliable such information has not been verified, and no express representation is made nor is any to be implied as to the accuracy thereof, and it is submitted subject to errors, omissions, change of price, rental or other conditions, prior sale, lease or financing, or withdrawal without notice.