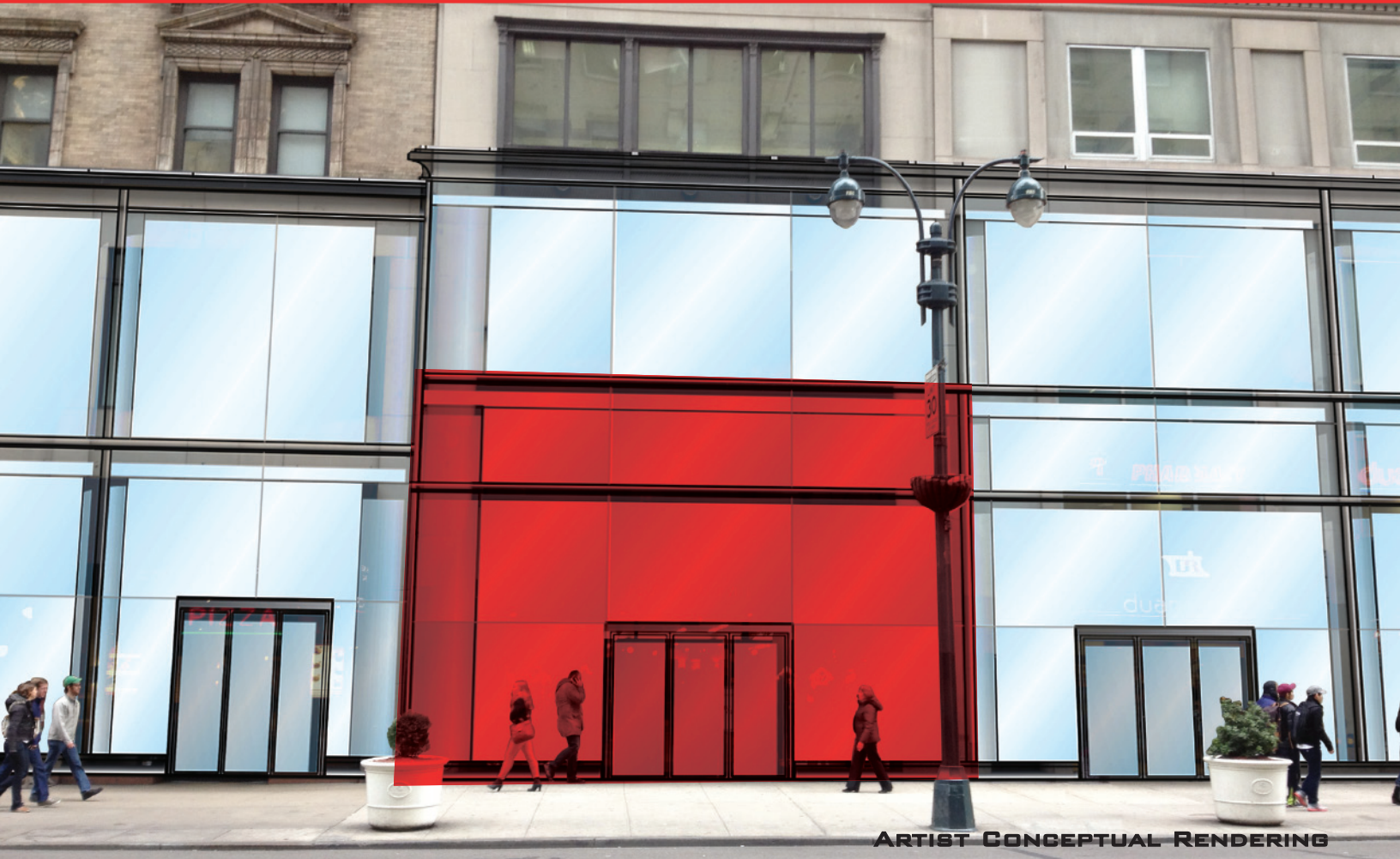


A WINICK REALTY GROUP LLC EXCLUSIVE PROPERTY

535 FIFTH AVENUE

LOCATED BETWEEN EAST 44TH AND 45TH STREETS



ARTIST CONCEPTUAL RENDERING

MAKE YOUR MARK!

FLAGSHIP FIFTH AVENUE RETAIL OPPORTUNITY

NEW YORK, NY 10017

EXCLUSIVELY REPRESENTED BY:

MICHAEL GLEICHER

LORI SHABTAI, EVP

JEFF WINICK, CEO

212.792.2601

535 FIFTH AVENUE

SIZE:

2,306 SF - GROUND FLOOR
3,555 SF - LOWER LEVEL

CEILING HEIGHTS:

12' - GROUND FLOOR
12' - LOWER LEVEL

FRONTAGE:

30' OF FIFTH AVENUE FRONTAGE

POSSESSION:

ARRANGED

COMMENTS:

- CURRENTLY BARAMI
- EXCEPTIONAL GROUND VISIBILITY
- HALF A MILLION SHOPPERS WALK 5TH AVENUE DAILY
- SURROUNDED BY NATIONAL & INTERNATIONAL RETAILERS, RESTAURANTS, CORPORATE HEADQUARTERS AND GRAND CENTRAL STATION; THE 2ND LARGEST TRANSIT HUB IN NEW YORK CITY

