

# 295 Madison Avenue

East 41<sup>st</sup> Street between Park & Madison Avenues  
New York, NY 10017



*As exclusive agents, we are pleased to offer the following retail opportunity:*

- SIZE:** Ground Floor: 900 SF
- FRONTAGE:** 20' on East 41<sup>st</sup> Street
- POSSESSION:** Arranged
- ASKING RENT:** Upon Request
- COMMENTS:**
- One block from Grand Central Station, servicing over 750,000 riders daily.
  - At the base of a 330,000 SF office tower with over 1,000 employees.
- NEIGHBORS:** Grand Central Station, Starbucks, T-Mobile, Chipotle, Lord & Taylor, Library Hotel, Bryant Park, and many more!

**FOR FURTHER INFORMATION PLEASE CONTACT:**

Josh Singer  
212-792-2630  
[jsinger@winick.com](mailto:jsinger@winick.com)

**Winick Realty Group LLC - Licensed Real Estate Brokers**

655 Third Avenue, 8th Floor, New York, NY 10017 T: 212-792-2600 F: 212-792-2660 [www.winick.com](http://www.winick.com)

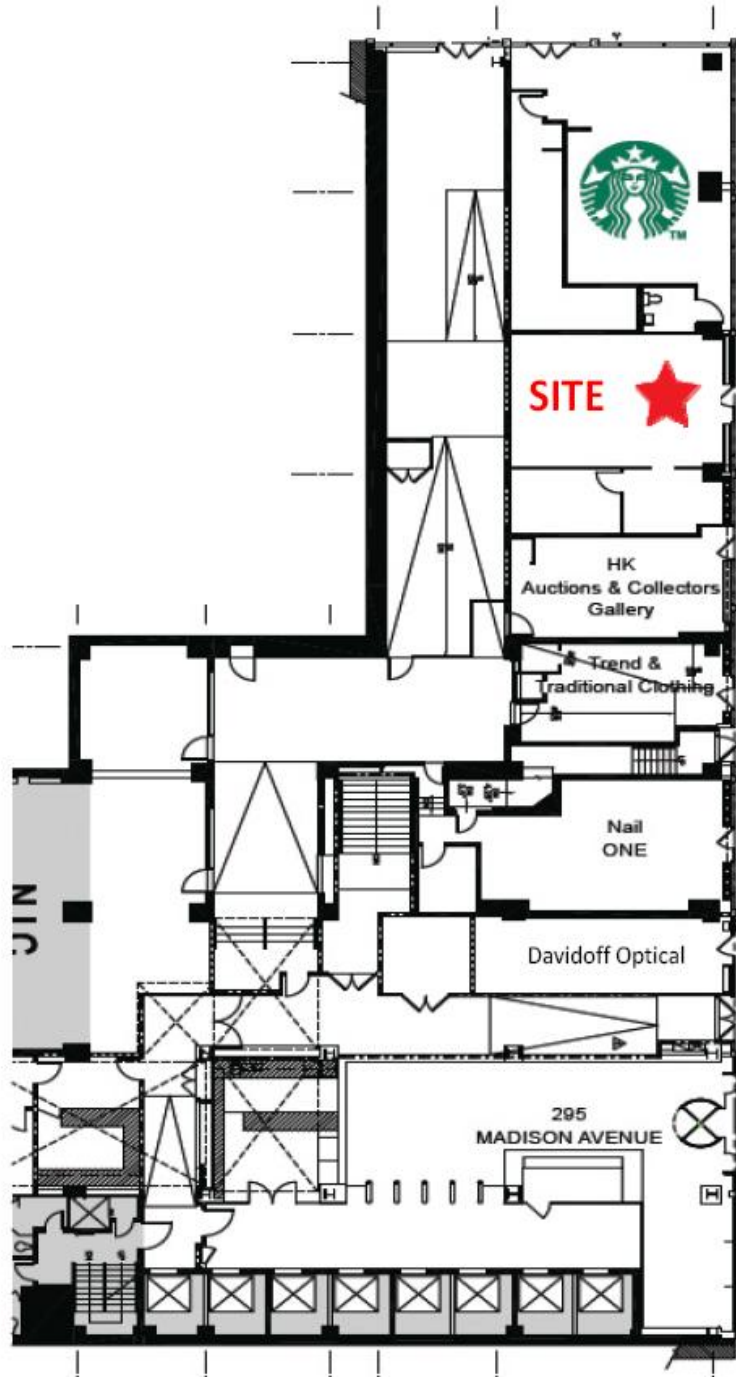
ALTHOUGH ALL INFORMATION REGARDING PROPERTY FOR SALE, RENTAL OR FINANCING IS FROM SOURCES DEEMED RELIABLE SUCH INFORMATION HAS NOT BEEN VERIFIED, AND NO EXPRESS REPRESENTATION IS MADE NOR IS ANY TO BE IMPLIED AS TO THE ACCURACY THEREOF, AND IT IS SUBMITTED SUBJECT TO ERRORS, OMISSIONS, CHANGE OF PRICE, RENTAL OR OTHER CONDITIONS, PRIOR SALE, LEASE OR FINANCING, OR WITHDRAWAL WITHOUT NOTICE.

**RETAIL**

# 295 Madison Avenue

East 41<sup>st</sup> Street between Park & Madison Avenues  
 New York, NY 10017

**MADISON AVENUE**



**EAST 41ST STREET**

