



WINICK REALTY GROUP LLC

281 BROADWAY

Between Chambers & Reade Streets
New York, NY 10007



As exclusive agents we are pleased to offer the following retail opportunity:

- SIZE:** Ground Floor 3,200 to 3,950 SF – 14’ Ceilings
Second Floor 4,982 SF - 14’ ceilings
Lower Level 4,900 SF - 13’ ceilings
- FRONTAGE:** 75’ on Broadway
- POSSESSION:** Immediate
- ASKING RENTS:** Upon Request
- COMMENTS:** New Construction at the base of 84 new luxury condos
Great traffic, Across from City Hall and the Federal Building
- NEIGHBORS:** Chipotle, Potbelly coming soon, 7-11 coming soon, Chase Bank, Citibank, HSBC, Modell’s, Emigrant Savings, Duane Reade, Starbucks, Strawberry, Staples, J&R Music World, Century 21
Neighboring Subway Lines: 1,2,3,4,5,6,A,C,E,J,Z,N,R

FOR FURTHER INFORMATION PLEASE CONTACT EXCLUSIVE AGENTS:

Darrell Rubens
212-792-2616
rubens@winick.com

Lee Block
212-792-2649
lee@winick.com

Annie Shinn
212-792-2625
ashinn@winick.com

FiDi RETAIL
Financial District

Winick Realty Group LLC– Licensed Real Estate Brokers

655 Third Avenue, 8th Floor, New York, NY 10017 T: 212-792-2600 F: 212-792-2660 www.winick.com

ALTHOUGH ALL INFORMATION REGARDING PROPERTY FOR SALE, RENTAL OR FINANCING IS FROM SOURCES DEEMED RELIABLE SUCH INFORMATION HAS NOT BEEN VERIFIED, AND NO EXPRESS REPRESENTATION IS MADE NOR IS ANY TO BE IMPLIED AS TO THE ACCURACY THEREOF, AND IT IS SUBMITTED SUBJECT TO ERRORS, OMISSIONS, CHANGE OF PRICE, RENTAL OR OTHER CONDITIONS, PRIOR SALE, LEASE OR FINANCING, OR WITHDRAWAL WITHOUT NOTICE.

281 BROADWAY

Between Chambers & Reade Streets
 New York, NY 10007



GROUND FLOOR

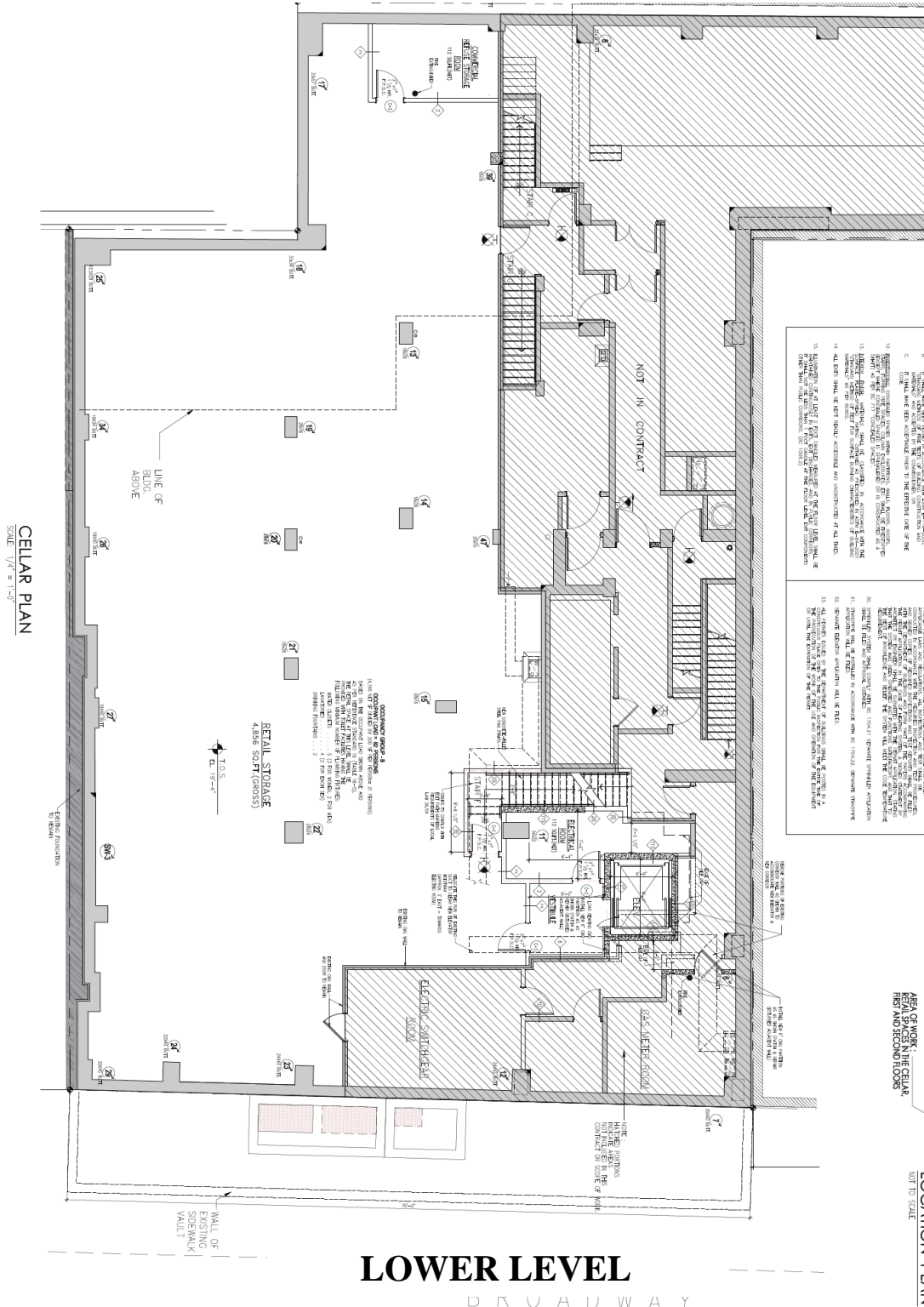
Winick Realty Group LLC – Licensed Real Estate Brokers

655 Third Avenue, 8th Floor, New York, NY 10017 T: 212-792-2600 F: 212-792-2660 www.winick.com

ALTHOUGH ALL INFORMATION REGARDING PROPERTY FOR SALE, RENTAL OR FINANCING IS FROM SOURCES DEEMED RELIABLE SUCH INFORMATION HAS NOT BEEN VERIFIED, AND NO EXPRESS REPRESENTATION IS MADE NOR IS ANY TO BE IMPLIED AS TO THE ACCURACY THEREOF, AND IT IS SUBMITTED SUBJECT TO ERRORS, OMISSIONS, CHANGE OF PRICE, RENTAL OR OTHER CONDITIONS, PRIOR SALE, LEASE OR FINANCING, OR WITHDRAWAL WITHOUT NOTICE.

281 BROADWAY

Between Chambers & Reade Streets
 New York, NY 10007

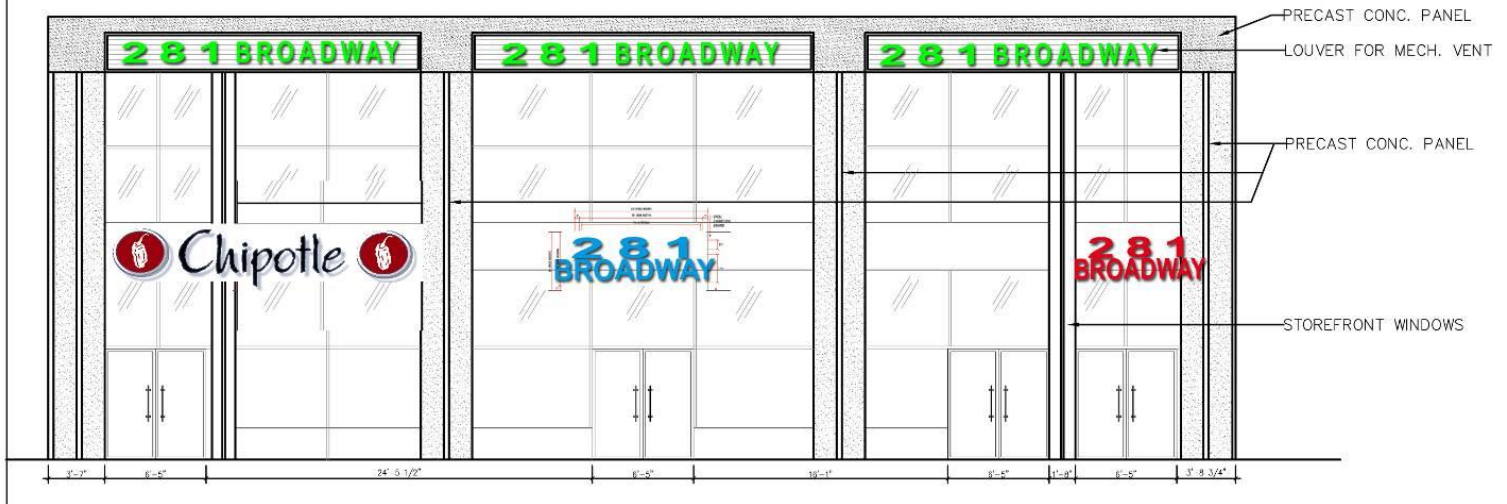
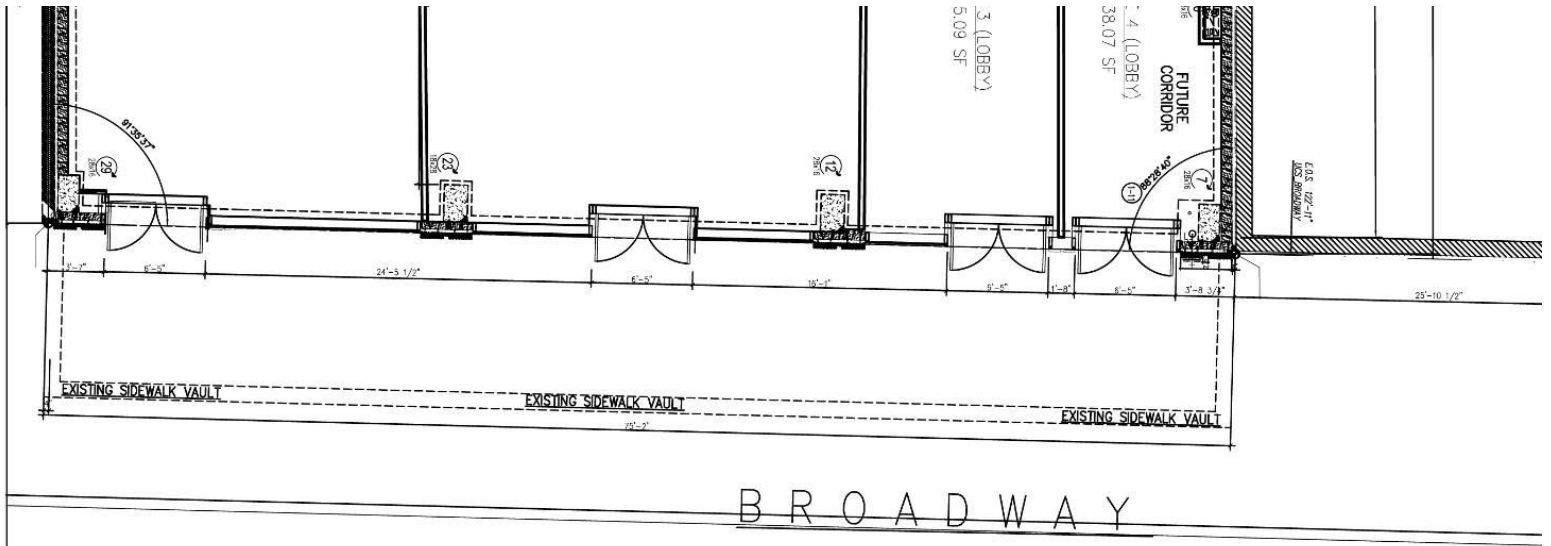


Winick Realty Group LLC – Licensed Real Estate Brokers
 655 Third Avenue, 8th Floor, New York, NY 10017 T: 212-792-2600 F: 212-792-2660 www.winick.com

ALTHOUGH ALL INFORMATION REGARDING PROPERTY FOR SALE, RENTAL OR FINANCING IS FROM SOURCES DEEMED RELIABLE SUCH INFORMATION HAS NOT BEEN VERIFIED, AND NO EXPRESS REPRESENTATION IS MADE NOR IS ANY TO BE IMPLIED AS TO THE ACCURACY THEREOF, AND IT IS SUBMITTED SUBJECT TO ERRORS, OMISSIONS, CHANGE OF PRICE, RENTAL OR OTHER CONDITIONS, PRIOR SALE, LEASE OR FINANCING, OR WITHDRAWAL WITHOUT NOTICE.

281 BROADWAY

Between Chambers & Reade Streets
 New York, NY 10007



Winick Realty Group LLC – Licensed Real Estate Brokers

655 Third Avenue, 8th Floor, New York, NY 10017 T: 212-792-2600 F: 212-792-2660 www.winick.com

ALTHOUGH ALL INFORMATION REGARDING PROPERTY FOR SALE, RENTAL OR FINANCING IS FROM SOURCES DEEMED RELIABLE SUCH INFORMATION HAS NOT BEEN VERIFIED, AND NO EXPRESS REPRESENTATION IS MADE NOR IS ANY TO BE IMPLIED AS TO THE ACCURACY THEREOF, AND IT IS SUBMITTED SUBJECT TO ERRORS, OMISSIONS, CHANGE OF PRICE, RENTAL OR OTHER CONDITIONS, PRIOR SALE, LEASE OR FINANCING, OR WITHDRAWAL WITHOUT NOTICE.



WINICK REALTY GROUP LLC

281 BROADWAY

Between Chambers & Reade Streets
New York, NY 10007



Winick Realty Group LLC – Licensed Real Estate Brokers

655 Third Avenue, 8th Floor, New York, NY 10017 T: 212-792-2600 F: 212-792-2660 www.winick.com

ALTHOUGH ALL INFORMATION REGARDING PROPERTY FOR SALE, RENTAL OR FINANCING IS FROM SOURCES DEEMED RELIABLE SUCH INFORMATION HAS NOT BEEN VERIFIED, AND NO EXPRESS REPRESENTATION IS MADE NOR IS ANY TO BE IMPLIED AS TO THE ACCURACY THEREOF, AND IT IS SUBMITTED SUBJECT TO ERRORS, OMISSIONS, CHANGE OF PRICE, RENTAL OR OTHER CONDITIONS, PRIOR SALE, LEASE OR FINANCING, OR WITHDRAWAL WITHOUT NOTICE.