



As exclusive agents we are pleased to offer the following retail opportunity:

SIZE: Space A: Ground Floor: 650 SF
Space B: Ground Floor: 458 SF

POSSESSION: Immediate

FRONTAGE: Space A: 25' on East 85th Street
Space B: 10' on East 85th Street

ASKING RENT: Upon Request

COMMENTS:

- Perfect for medical & professional uses
- Spaces can be combined
- Elevator accessible

NEIGHBORS: Panorama Café, Mustang, Vespa, Energy Kitchen, Poke, Capitol Chemists, Starbucks, M.Rohrs

FOR FURTHER INFORMATION PLEASE CONTACT:

Ann La Centra
212-792-2652
ann@winick.com

Josh Siegelman
212-792-2613
jsiegelman@winick.com

RETAIL

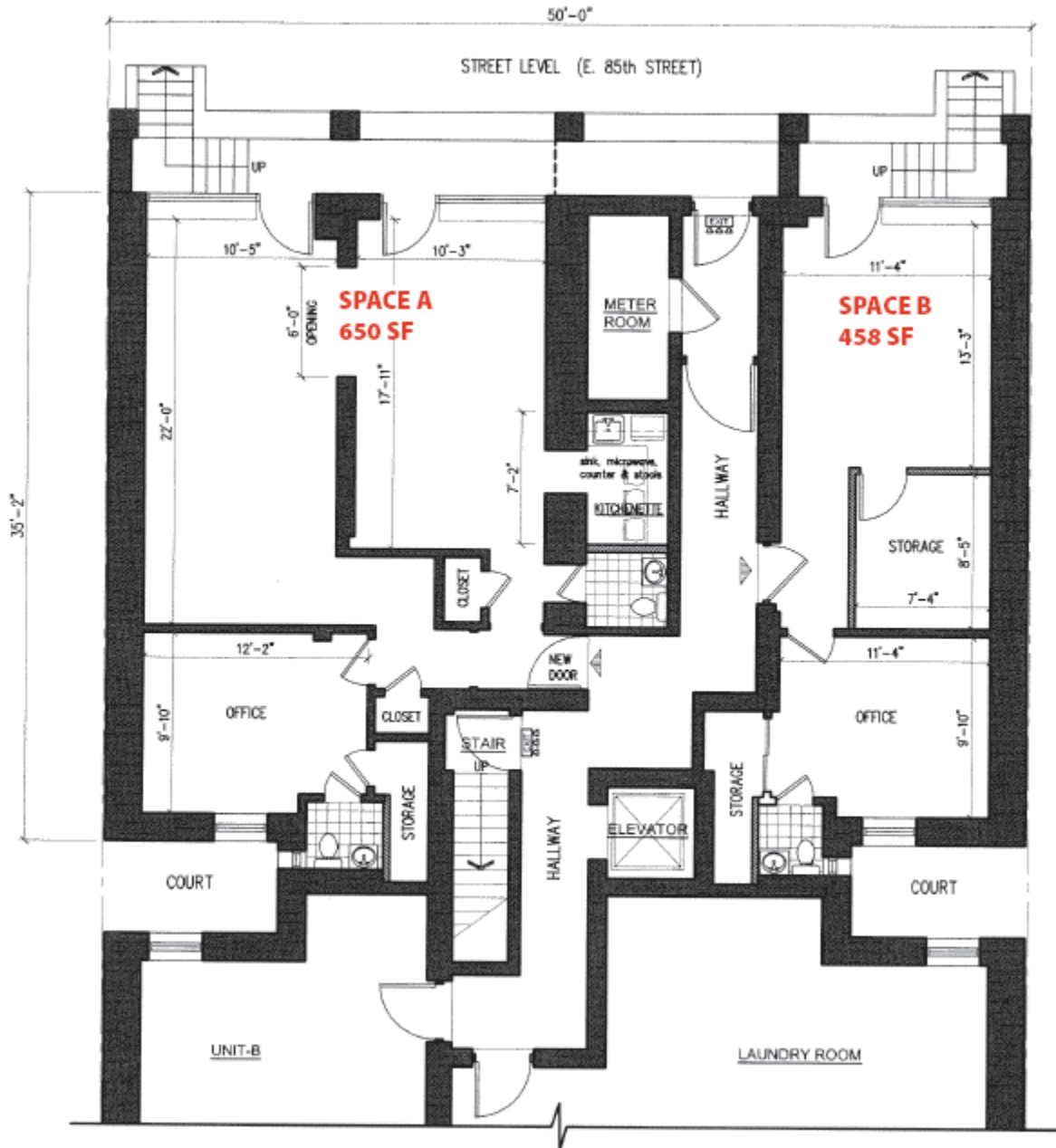
Winick Realty Group LLC - Licensed Real Estate Brokers

655 Third Avenue, 8th Floor, New York, NY 10017 T: 212-792-2600 F: 212-792-2660 www.winick.com

ALTHOUGH ALL INFORMATION REGARDING PROPERTY FOR SALE, RENTAL OR FINANCING IS FROM SOURCES DEEMED RELIABLE SUCH INFORMATION HAS NOT BEEN VERIFIED, AND NO EXPRESS REPRESENTATION IS MADE NOR IS ANY TO BE IMPLIED AS TO THE ACCURACY THEREOF, AND IT IS SUBMITTED SUBJECT TO ERRORS, OMISSIONS, CHANGE OF PRICE, RENTAL OR OTHER CONDITIONS, PRIOR SALE, LEASE OR FINANCING, OR WITHDRAWAL WITHOUT NOTICE.

330 East 85th Street

Between First & Second Avenue
 New York, NY 10028



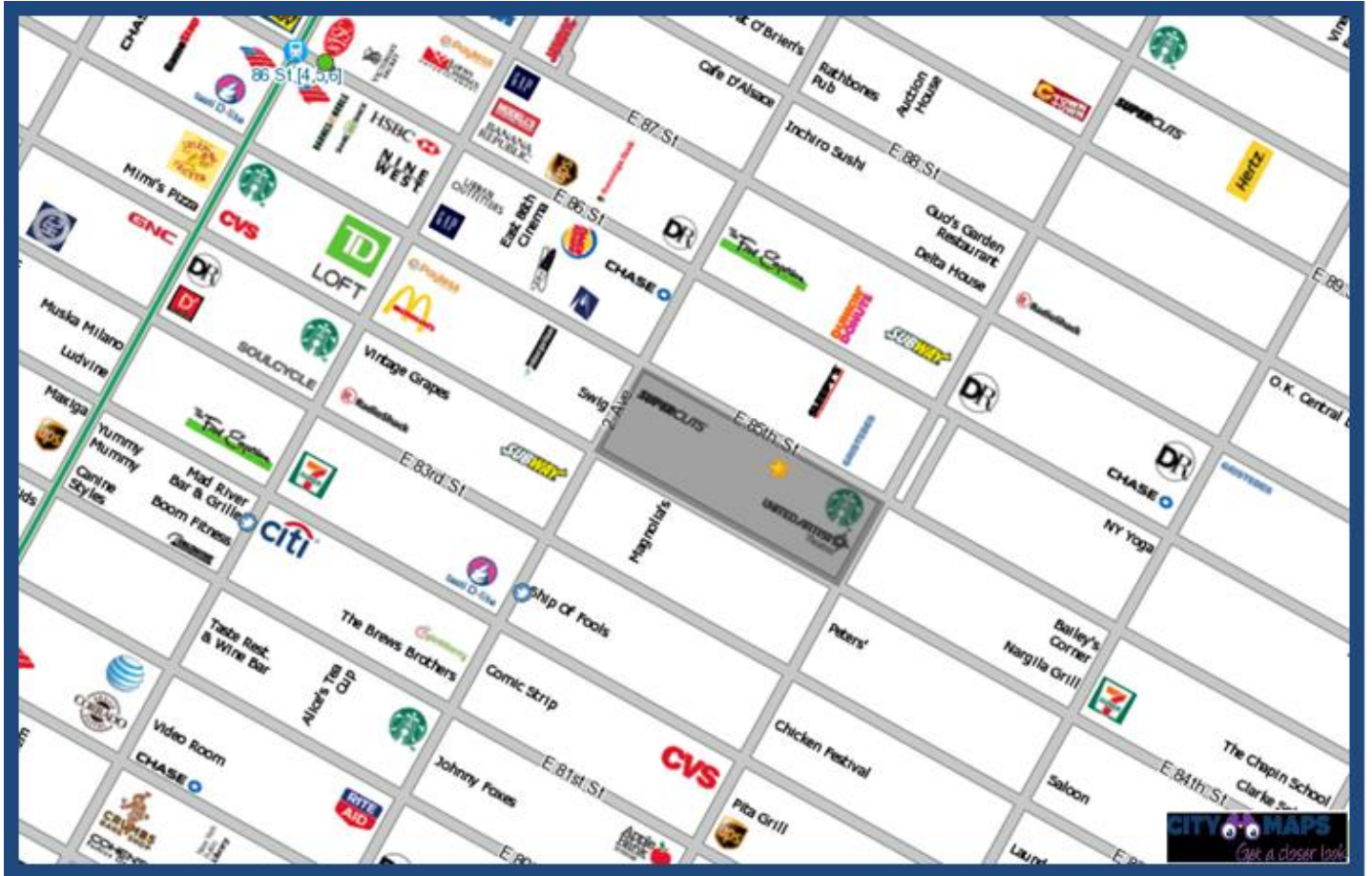
Winick Realty Group LLC - Licensed Real Estate Brokers

655 Third Avenue, 8th Floor, New York, NY 10017 T: 212-792-2600 F: 212-792-2660 www.winick.com

ALTHOUGH ALL INFORMATION REGARDING PROPERTY FOR SALE, RENTAL OR FINANCING IS FROM SOURCES DEEMED RELIABLE SUCH INFORMATION HAS NOT BEEN VERIFIED, AND NO EXPRESS REPRESENTATION IS MADE NOR IS ANY TO BE IMPLIED AS TO THE ACCURACY THEREOF, AND IT IS SUBMITTED SUBJECT TO ERRORS, OMISSIONS, CHANGE OF PRICE, RENTAL OR OTHER CONDITIONS, PRIOR SALE, LEASE OR FINANCING, OR WITHDRAWAL WITHOUT NOTICE.

330 East 85th Street

Between First & Second Avenue
New York, NY 10028



Winick Realty Group LLC - Licensed Real Estate Brokers

655 Third Avenue, 8th Floor, New York, NY 10017 T: 212-792-2600 F: 212-792-2660 www.winick.com

ALTHOUGH ALL INFORMATION REGARDING PROPERTY FOR SALE, RENTAL OR FINANCING IS FROM SOURCES DEEMED RELIABLE SUCH INFORMATION HAS NOT BEEN VERIFIED, AND NO EXPRESS REPRESENTATION IS MADE NOR IS ANY TO BE IMPLIED AS TO THE ACCURACY THEREOF, AND IT IS SUBMITTED SUBJECT TO ERRORS, OMISSIONS, CHANGE OF PRICE, RENTAL OR OTHER CONDITIONS, PRIOR SALE, LEASE OR FINANCING, OR WITHDRAWAL WITHOUT NOTICE.