



As Exclusive Agents we are pleased to offer the following retail opportunity:

- SIZE:** Ground Floor: 1,825 Square Feet
- FRONTAGE:** 18 Feet
- POSSESSION:** Immediate
- ASKING RENT:** Upon Request
- COMMENTS:**
- High Traffic Chelsea Retail on a Very Busy Restaurant Block
 - Located Near 18th and 23rd Street #1 Subway Stations
 - All Uses Considered
- NEIGHBORS:** Eolo, Piermont Cleaners, Regional Thai, Salsa y Salsa, IL Bastardo, Hisako Salon, Malin + Goetz, Le Singe Vert, and Many More

FOR FURTHER INFORMATION PLEASE CONTACT:

Alexander Hill
212-792-2655
ahill@winick.com

Winick Realty Group LLC - Licensed Real Estate Brokers

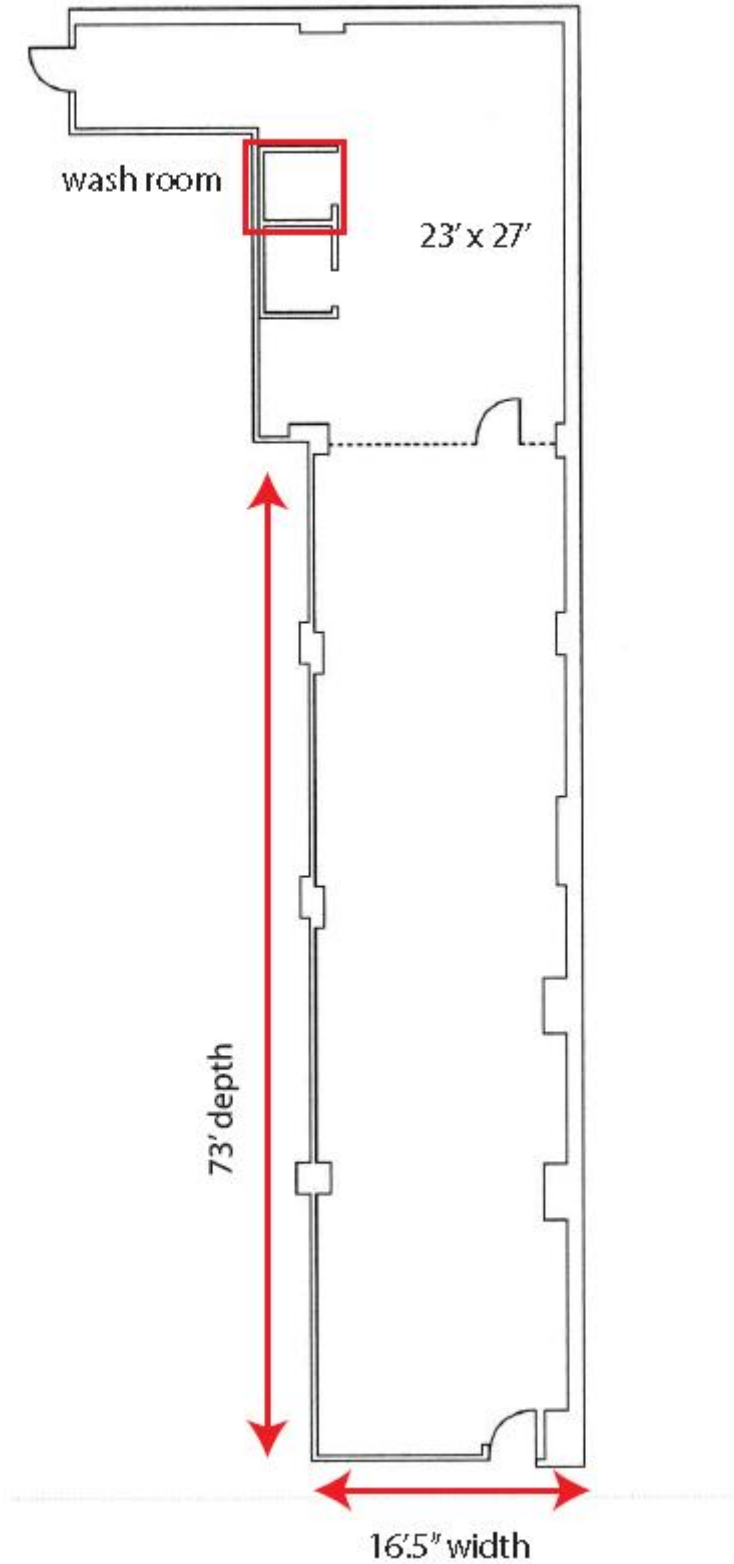
655 Third Avenue, 8th Floor, New York, NY 10017 T: 212-792-2600 F: 212-792-2660 www.winick.com

ALTHOUGH ALL INFORMATION REGARDING PROPERTY FOR SALE, RENTAL OR FINANCING IS FROM SOURCES DEEMED RELIABLE SUCH INFORMATION HAS NOT BEEN VERIFIED, AND NO EXPRESS REPRESENTATION IS MADE NOR IS ANY TO BE IMPLIED AS TO THE ACCURACY THEREOF, AND IT IS SUBMITTED SUBJECT TO ERRORS, OMISSIONS, CHANGE OF PRICE, RENTAL OR OTHER CONDITIONS, PRIOR SALE, LEASE OR FINANCING, OR WITHDRAWAL WITHOUT NOTICE.

RETAIL

194 7th Avenue

Between West 21st and West 22nd Streets
New York, NY 10011



Winick Realty Group LLC - Licensed Real Estate Brokers

655 Third Avenue, 8th Floor, New York, NY 10017 T: 212-792-2600 F: 212-792-2660 www.winick.com

ALTHOUGH ALL INFORMATION REGARDING PROPERTY FOR SALE, RENTAL OR FINANCING IS FROM SOURCES DEEMED RELIABLE SUCH INFORMATION HAS NOT BEEN VERIFIED, AND NO EXPRESS REPRESENTATION IS MADE NOR IS ANY TO BE IMPLIED AS TO THE ACCURACY THEREOF, AND IT IS SUBMITTED SUBJECT TO ERRORS, OMISSIONS, CHANGE OF PRICE, RENTAL OR OTHER CONDITIONS, PRIOR SALE, LEASE OR FINANCING, OR WITHDRAWAL WITHOUT NOTICE.