



# FLAGSHIP LOCATION MEATPACKING

Between 9th Avenue & Washington Street

## THE RETAIL AT THE MEATPACKING DISTRICT



### HIGHLIGHTS:

- Up to 6,400 SF of Retail Space
- Ground Floor: 3,600 SF
- Approx. 30' of Frontage on 14th Street
- Basement: 2,800 SF

### JOIN THESE NEIGHBORING RETAILERS

Diane Von Furstenberg, Scoop, Paige Premium Denim, Jeffrey, Krizia, Levi's, Design Within Reach, Puma, La Perla, Lilla P, Ed Hardy, Hugo Boss, Moschino, Apple, Sephora, Hotel Gansevoort, The Standard New York and many more...

EXCLUSIVELY REPRESENTED BY:

212.792.2637

JEFF WINICK, CEO  
KELLY GEDINSKY

jeff@winick.com  
kelly@winick.com

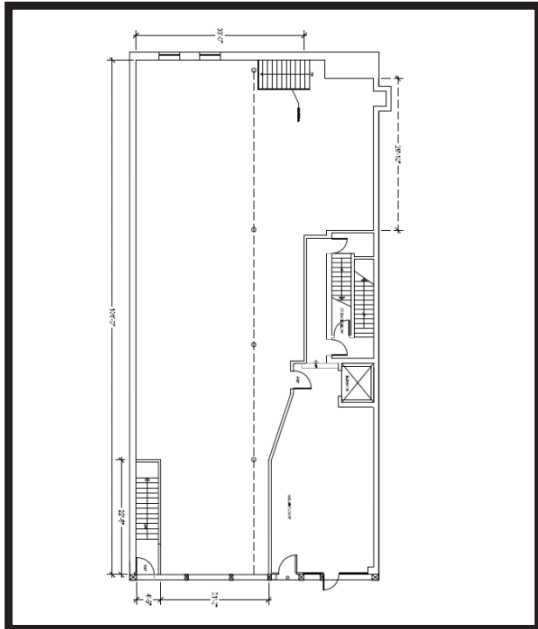


# RETAIL MAP:



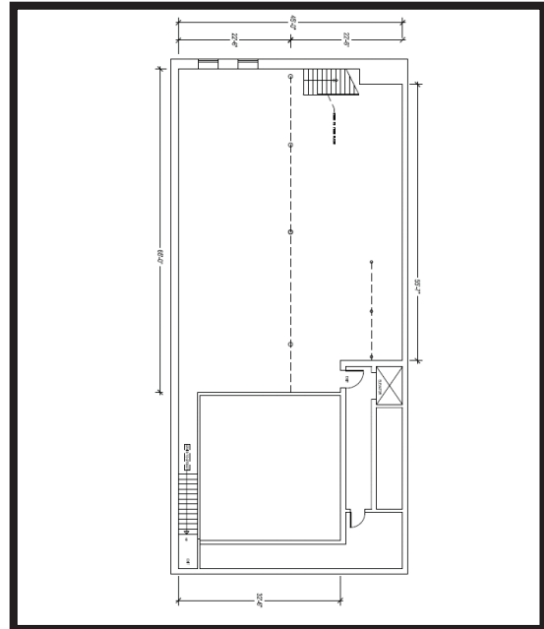
# FLOOR PLANS:

**GROUND FLOOR**



**3,600 SF**

**BASEMENT**



**2,800 SF**



**WINICK REALTY GROUP LLC**  
LICENSED REAL ESTATE BROKERS

**WINICK REALTY GROUP LLC - LICENSED REAL ESTATE BROKERS**  
655 Third Avenue, 8th Floor, New York, NY 10017 T: 212-792-2600 F: 212-792-2660 [www.winick.com](http://www.winick.com)

Although All Information Regarding Property For Sale, Rental Or Financing Is From Sources Deemed Reliable Such Information Has Not Been Verified, And No Express Representation Is Made Nor Is Any To Be Implied As To The Accuracy Thereof, And It Is Submitted Subject To Errors, Omissions, Change Of Price, Rental Or Other Conditions, Prior Sale, Lease Or Financing, Or Withdrawal Without Notice.