

521 West 42nd Street

Between Tenth & Eleventh Avenues
 New York, NY 10036



As exclusive agents, we are pleased to offer the following retail opportunity:

SIZE: Ground: Approx. 2,860 Square Feet

FRONTAGE: Approx. 54' on West 42nd Street

POSSESSION: Immediate

ASKING RENT: Upon Request

COMMENTS:

- 72 unit residential building
- 2,500 residential units under construction within two block radius.
- One block from the Javits expansion site
- Community Board #4
- All Uses Considered

NEIGHBORS: Chop't (coming soon), Silver Towers Residences, Related's MiMa Residences, CVS Pharmacy, Signature Theatre, Travel Inn

FOR FURTHER INFORMATION PLEASE CONTACT:

Jeff Winick, CEO
 212-792-2601
jeff@winick.com

Michael Gleicher
 212-792-2640
mgleicher@winick.com

Ross Burack
 212-792-2624
rburack@winick.com

RETAIL

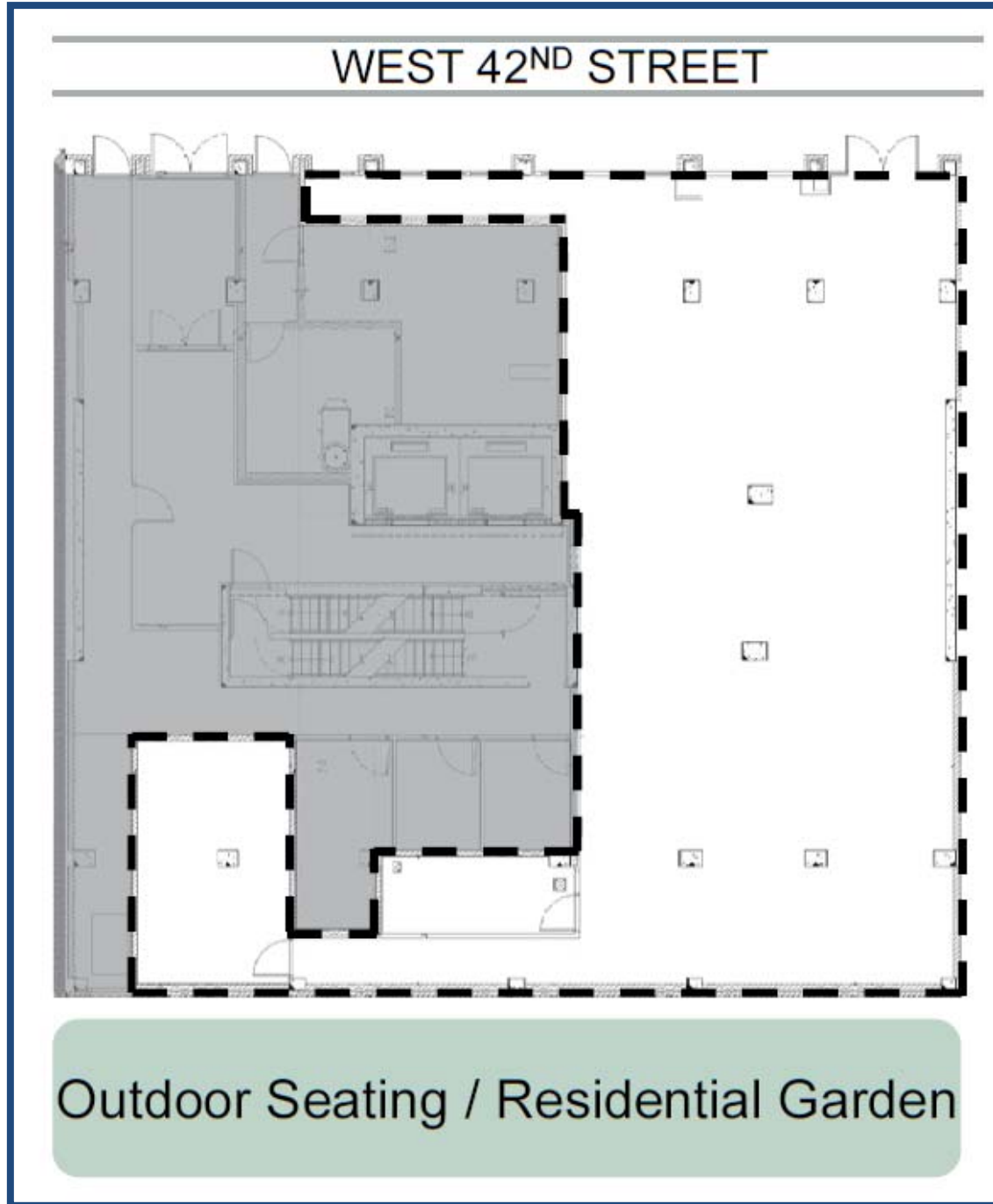
Winick Realty Group LLC - Licensed Real Estate Brokers

655 Third Avenue, 8th Floor, New York, NY 10017 T: 212-792-2600 F: 212-792-2660 www.winick.com

ALTHOUGH ALL INFORMATION REGARDING PROPERTY FOR SALE, RENTAL OR FINANCING IS FROM SOURCES DEEMED RELIABLE SUCH INFORMATION HAS NOT BEEN VERIFIED, AND NO EXPRESS REPRESENTATION IS MADE NOR IS ANY TO BE IMPLIED AS TO THE ACCURACY THEREOF, AND IT IS SUBMITTED SUBJECT TO ERRORS, OMISSIONS, CHANGE OF PRICE, RENTAL OR OTHER CONDITIONS, PRIOR SALE, LEASE OR FINANCING, OR WITHDRAWAL WITHOUT NOTICE.

521 West 42nd Street

Between Tenth & Eleventh Avenues
New York, NY 10036



Winick Realty Group LLC - Licensed Real Estate Brokers

655 Third Avenue, 8th Floor, New York, NY 10017 T: 212-792-2600 F: 212-792-2660 www.winick.com

ALTHOUGH ALL INFORMATION REGARDING PROPERTY FOR SALE, RENTAL OR FINANCING IS FROM SOURCES DEEMED RELIABLE SUCH INFORMATION HAS NOT BEEN VERIFIED, AND NO EXPRESS REPRESENTATION IS MADE NOR IS ANY TO BE IMPLIED AS TO THE ACCURACY THEREOF, AND IT IS SUBMITTED SUBJECT TO ERRORS, OMISSIONS, CHANGE OF PRICE, RENTAL OR OTHER CONDITIONS, PRIOR SALE, LEASE OR FINANCING, OR WITHDRAWAL WITHOUT NOTICE.