

## RETAIL CONDO FOR SALE OR LEASE PRIME MEDICAL SPACE



RETAIL

**As exclusive agents, we are pleased to offer the following retail opportunity:**

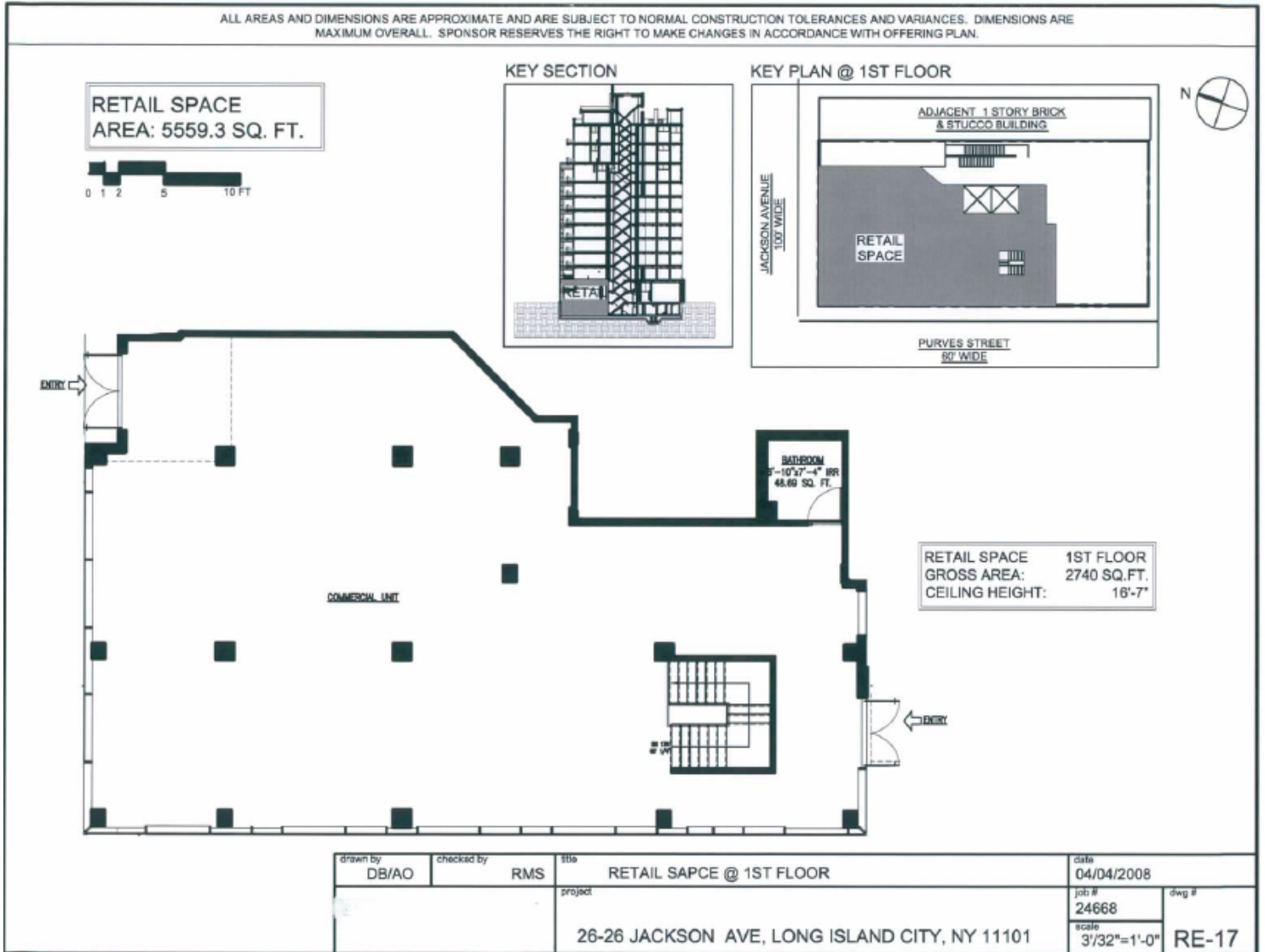
- SIZE:** Ground Floor: 2,800 Square Feet  
 Lower Level: 2,800 Square Feet
- CEILING HEIGHTS:** Ground Floor: 15 Feet  
 Lower Level: 9 Feet
- ASKING RENT:** Upon Request
- POSSESSION:** Immediate
- FRONTAGE:** 50 Feet on Jackson Avenue  
 50 Feet on Purves Street
- COMMENTS:** • New Luxury Residential Building • Convenient Public Transportation • New Trendy Neighborhood • Extensive All Glass Frontage • High Ceilings • New 200 Residential Unit • Development Directly Across the Street – One Court Square (54 Story, 1,401,630 SF Fully Leased Class A Office Tower) & Court Square Place (16 Story, 274,435 SF Fully Leased Class A Office Tower) • **FOOD OK** • Excellent Access and Visibility
- NEIGHBORS:** L.I.C. Court House, Queens Library, CitiBank, Capital One, Sage American Kitchen, Court Square Diner, Sculpture Center, New York Community Bank, PS 1 – MOMA, HSBC
- FOR FURTHER INFORMATION PLEASE CONTACT:**
- Diana D. Boutross**  
 (212) 792-2608  
[diana@winick.com](mailto:diana@winick.com)
- Jeff Winick, CEO**  
 (212) 792-2601  
[jeff@winick.com](mailto:jeff@winick.com)

**Winick Realty Group LLC– Licensed Real Estate Brokers**  
 655 Third Avenue, 8th Floor, New York, NY 10017 T: 212-792-2600 F: 212-792-2660 [www.winick.com](http://www.winick.com)

# 26-26 JACKSON AVENUE

Corner of Purves Street  
Long Island City, NY 11101

## RETAIL CONDO FOR SALE OR LEASE PRIME MEDICAL SPACE



**Winick Realty Group LLC – Licensed Real Estate Brokers**

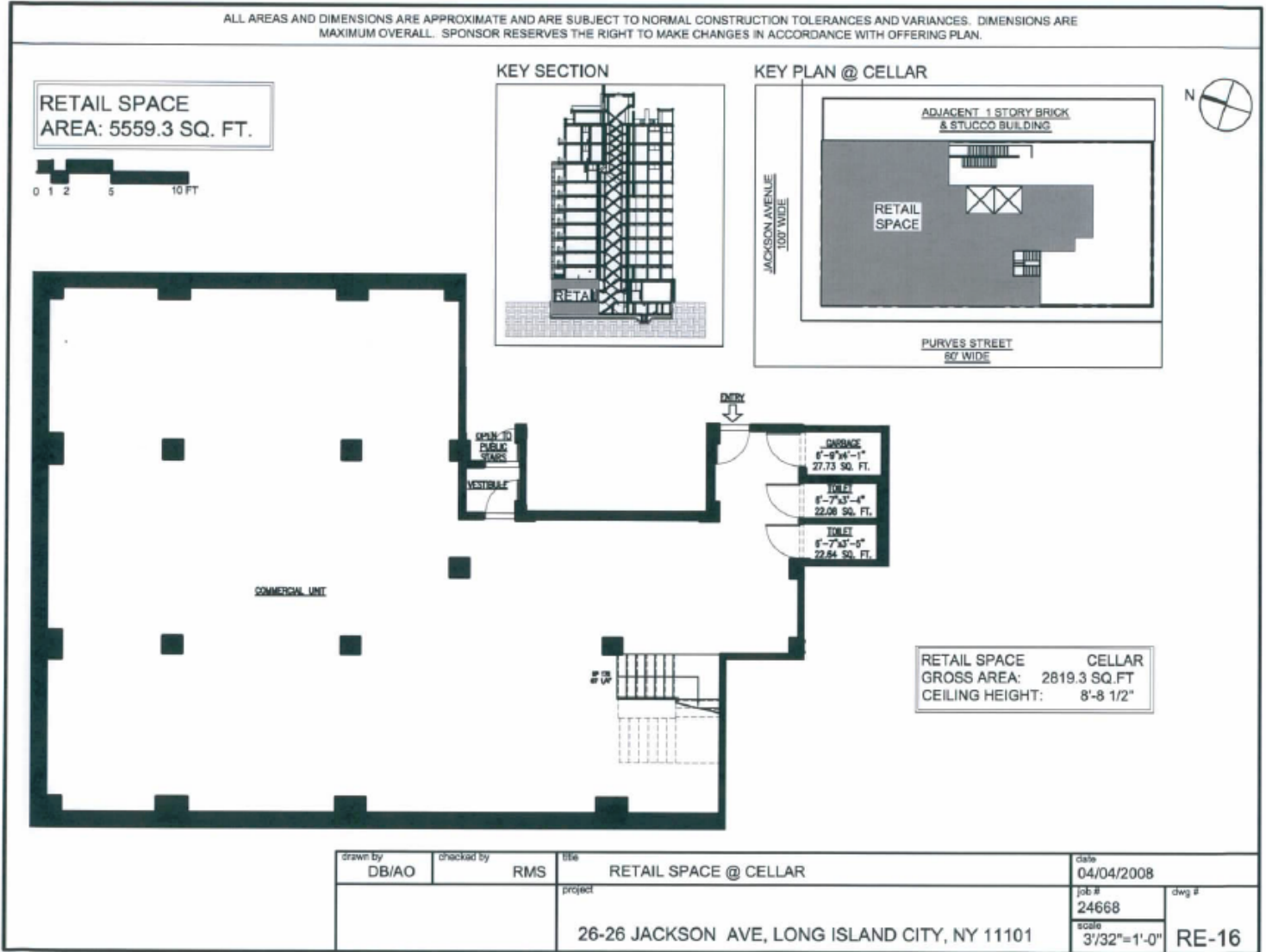
655 Third Avenue, 8th Floor, New York, NY 10017 T: 212-792-2600 F: 212-792-2660 [www.winick.com](http://www.winick.com)

ALTHOUGH ALL INFORMATION REGARDING PROPERTY FOR SALE, RENTAL OR FINANCING IS FROM SOURCES DEEMED RELIABLE SUCH INFORMATION HAS NOT BEEN VERIFIED, AND NO EXPRESS REPRESENTATION IS MADE NOR IS ANY TO BE IMPLIED AS TO THE ACCURACY THEREOF, AND IT IS SUBMITTED SUBJECT TO ERRORS, OMISSIONS, CHANGE OF PRICE, RENTAL OR OTHER CONDITIONS, PRIOR SALE, LEASE OR FINANCING, OR WITHDRAWAL WITHOUT NOTICE.

# 26-26 JACKSON AVENUE

Corner of Purves Street  
 Long Island City, NY 11101

## RETAIL CONDO FOR SALE OR LEASE PRIME MEDICAL SPACE



**Winick Realty Group LLC– Licensed Real Estate Brokers**

655 Third Avenue, 8th Floor, New York, NY 10017 T: 212-792-2600 F: 212-792-2660 [www.winick.com](http://www.winick.com)

ALTHOUGH ALL INFORMATION REGARDING PROPERTY FOR SALE, RENTAL OR FINANCING IS FROM SOURCES DEEMED RELIABLE SUCH INFORMATION HAS NOT BEEN VERIFIED, AND NO EXPRESS REPRESENTATION IS MADE NOR IS ANY TO BE IMPLIED AS TO THE ACCURACY THEREOF, AND IT IS SUBMITTED SUBJECT TO ERRORS, OMISSIONS, CHANGE OF PRICE, RENTAL OR OTHER CONDITIONS, PRIOR SALE, LEASE OR FINANCING, OR WITHDRAWAL WITHOUT NOTICE.